



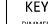





SWAN HILL TOWN HALL PERFORMING ARTS CONFERENCE CENTRE

THIS DRAWING:
STANDARD LX PLOT 2018

LEGEND:

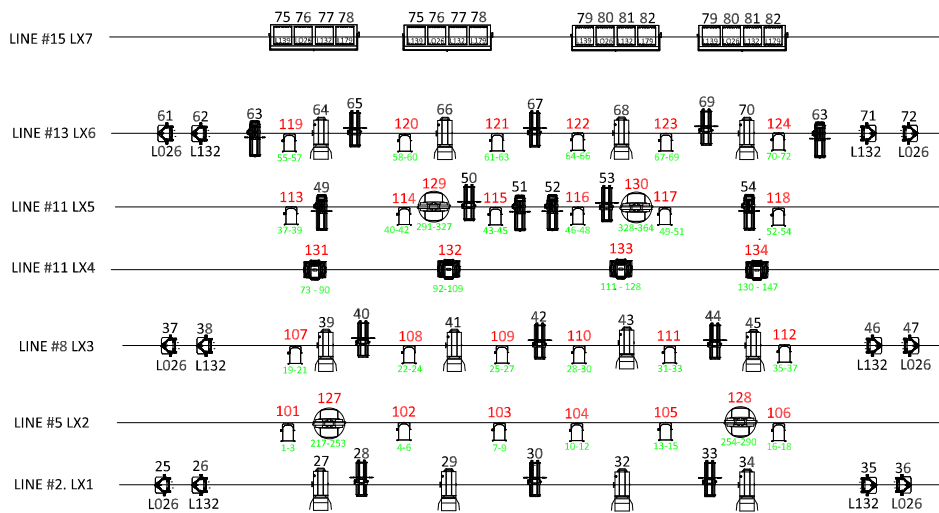
-  SELECON PACIFIC 12 - 28
-  SELECON PACIFIC 23 - 50
-  SELECON ACCLAIM 24 - 44
-  SELECON ACCLAIM 18 - 34
-  SELECON 1.2K FRESNEL
-  SELECON AURORA 4 WAY CYC
-  ETC 600W MULTIPAR
-  ROBE ROBIN 600
-  GLP IMPRESSION ONE
-  TOURPRO LED HYBRID
-  PRO SHOP RGB LED PAR CAN
-  BEAMZ RGBAUV LED
-  MIRRORBALL
-  SPARK LED RGBW STROBE

- KEY:
-  DIMMER #
 -  COLOUR
 -  DMX CHANNEL
 -  DMX CHANNEL

- NOTES:
- ANALOGUE FIXTURES - UNIVERSE #1
 - DIGITAL FIXTURES - UNIVERSE #2
 - DMX CHANNELS - UNIVERSE #2
 - SWF0G HAZER - CHANNEL 98 - DMX-365
 - SWF0G SMOKE - CHANNEL 99 - DMX-366
 - MIRRORBALL UNDERHUNG ON FOH TRUSS

DESIGNERS: CRAIG MARTIN - TECHNICAL COORDINATOR
BRAD MORPETH - VENUE TECHNICIAN

DRAW DATE: 5 - 02 - 2018



TOP OF PERCH

PERCH #1 O.P

23

TOP OF PERCH

PERCH #1 PRT.

21

TOP OF PERCH

PERCH #2 O.P

24

22

22

18

TOP OF PERCH

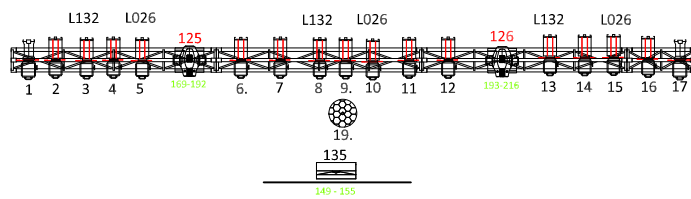
PERCH #2 PRT.

24

20

20

18



F.O.H. UNDER BALCONY REAR