

SWAN HILL TOWN HALL PERFORMING ARTS CONFERENCE CENTRE

THIS DRAWING:
STANDARD LX PLOT 2019

LEGEND:

- SELECON PACIFIC 12 - 28
- SELECON PACIFIC 23 - 50
- SELECON ACCLAIM 24 - 44
- SELECON ACCLAIM 18 - 34
- SELECON 1.2K FRESNEL
- SELECON AURORA
4 WAY CYC
- ETC 600W MULTIPAR
- ROBE ROBIN 600
- GLP IMPRESSION ONE
- TOURPRO LED HYBRID
- PRO SHOP RGB LED PAR CAN
- MIRRORBALL
- SPARK LED RGBW STROBE

KEY:



NOTES:

- ANALOGUE FIXTURES - UNIVERSE #1
- DIGITAL FIXTURES - UNIVERSE #2
- DMX CHANNELS - UNIVERSE #2
- SWEFOG HAZER - CHANNEL 98 - DMX -365
- SWEFOG SMOKE - CHANNEL 99 - DMX-366

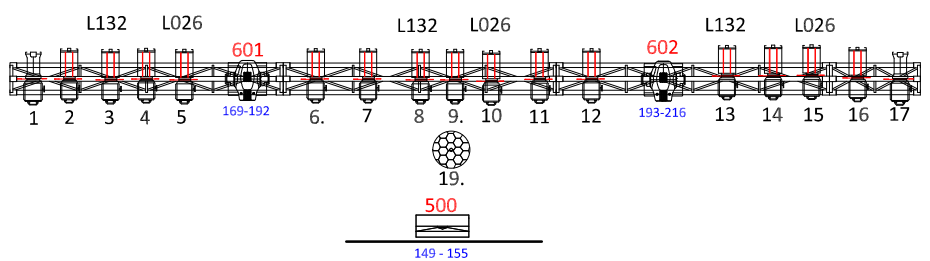
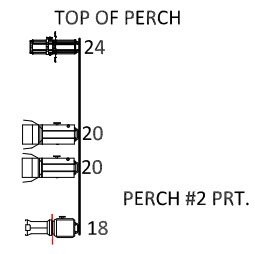
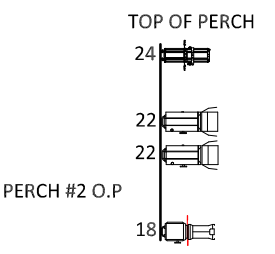
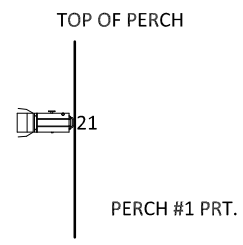
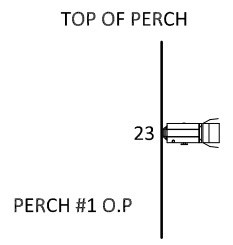
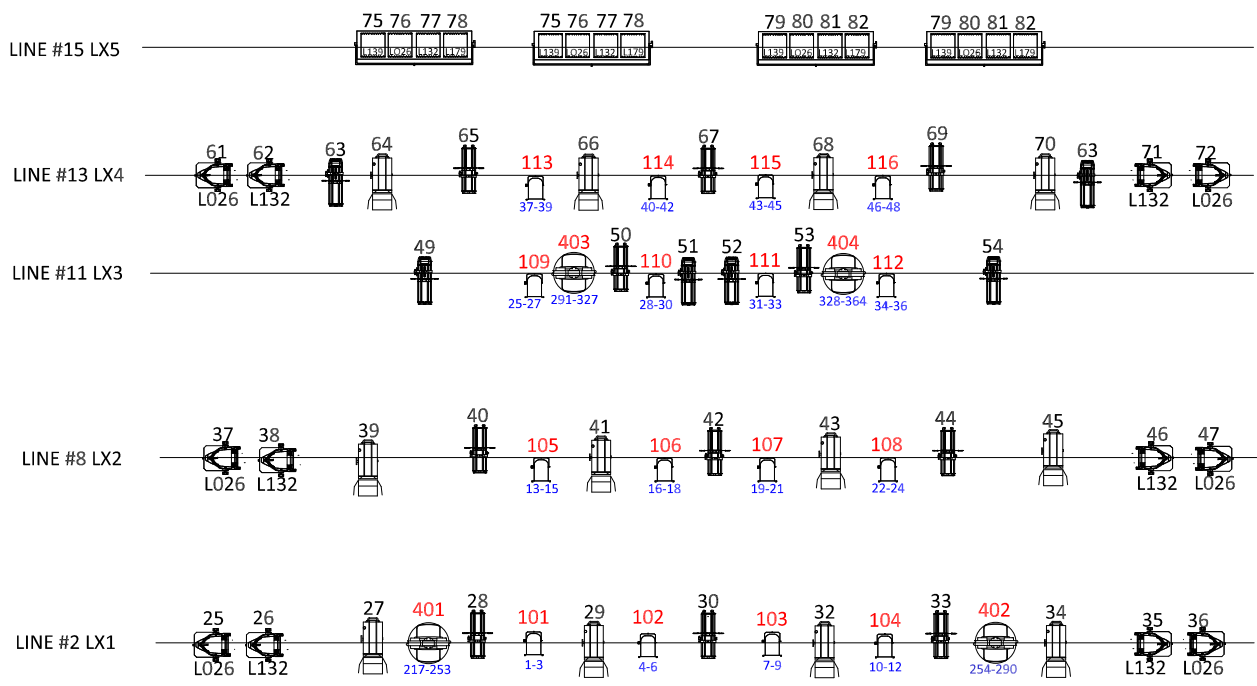
MIRRORBALL UNDERHUNG ON FOH TRUSS

DESIGNERS: CRAIG MARTIN - TECHNICAL COORDINATOR
BRAD MORPETH - VENUE TECHNICIAN

DRAW DATE: 12-03-2019

FLOOR / FLY PACKAGE

117 49-51	118 52-54	119 55-57	120 58-60
121 61-63	122 64-66	123 67-69	124 70-72
501 73 - 90	502 92-109		
503 111 - 128	504 130 - 147		



F.O.H. UNDER BALCONY REAR