



# SWAN HILL TOWN HALL

PERFORMING ARTS & CONFERENCE CENTRE

## Swan Hill Town Hall Performing Arts and Conference Centre

### Technical Specifications V10.

Updated 25-10-2019

## INDEX

Stage.....	3
Lighting.....	8
Audio.....	11
Audio Visual.....	14
Backstage.....	15
Additional facilities and information.....	17

# STAGE

## Stage description

Unraked stage with a proscenium arch and flying facilities. Jarrah floor, screwing into floor not permitted. Stage crossover behind cyclorama solid wall. It has a width restriction of .55m

Stage distributed load limit	7.5 kN/sqm
Stage point load limit	4.5kN/100m2
Stage rake	No

## Stage dimensions

### Proscenium

Width	9.665m
Height	5.090m
(Stage Depth)	8.68m

### Setting Line

Located up stage of proscenium to allow for fire curtain.

### Distance From (SL = Setting Line, CL = Centre Line)

SL to DS edge of apron	2.220m
SL to DS edge of Orchestra Lift/Pit	N/A
<b>SL to first fly line</b>	
SL to last upstage fly line	6.330m
SL to rear wall	6.460m
CL to OP wall (or obstruction)	4.832m
CL to PS wall (or obstruction)	4.832m
<b>Stage to underside of grid</b>	
Fly lines 1-6	7.260m
Fly lines 7- 17	10.605m

## Auditorium

Auditorium consists of flat removable seating down stairs, one balcony and dress circle upstairs with fixed stalls.

Seating capacity without orchestra lift/pit seating installed:	304 on floor / 457 Balcony	<b>Total 761</b>
--	----------------------------	------------------

## Orchestra Lift / Pit

Orchestra Pit: No orchestra pit available

# FLYING FACILITIES

## Fly System

Single purchase handline system

### Fly System Details

Operating Position:		OP at stage level	
Total number of Lines:		17	
Lines 1-6	Batten Drift:	Stage Floor to IN Position	1.22m
		Stage Floor to DEAD Position	5.42m
		Stage Floor to OUT Position	6.08m
	Batten Type :	48mm O/D	
	Batten Length:	12m	
	Batten Extensions:	N/A	
	Batten Pick-ups PS to:	1 <sup>st</sup> Pickup	1.99m
		2 <sup>nd</sup> Pickup	4.95m
		3 <sup>rd</sup> Pickup	7.94m
		4 <sup>th</sup> Pickup	10.38m
Lines 7-17	Batten Drift:	Stage Floor to IN Position	1.46m
		Stage Floor to DEAD Position	5.42m
		Stage Floor to OUT Position	10.62m
	Batten Type:	48mm O/D	
	Batten Length:	12m	
	Batten Extensions:	N/A	
	Batten Pick-ups PS to:	1 <sup>st</sup> Pickup	.7m
		2 <sup>nd</sup> Pickup	4.24m
		3 <sup>rd</sup> Pickup	7.74m
		4 <sup>th</sup> Pickup	11.21m
Batten Point Load:		150kg	
Batten W.L.L.:		250kg	
LX bars can be swung:		Yes	
Fly bars can be swung:		Yes	

SEE HANGING PLOT FOR LINE ALLOCATIONS AND FURTHER INFO

# HANGING PLOT

**SL:** Setting Line located up stage of proscenium to allow for fire curtain.

**Line Type:** SP = Single purchase  
 DP = Double purchase  
 MW = Motor Winch  
 HW = Hand Winch  
 HL = Handline

**W.L.L.:** Maximum distributed load including bar weight

Line #	Distance from SL	Line Type	W.L.L	Venue Allocation	Intended Use ( <i>hiring company use</i> )
1				Legs & Borders	
2				Spare – Front Projection	
3				LX1	
4				Spare	
5				LX2	
6				Legs & Borders	
7				French Action Tabs & Borders	
8				LX3	
9				Projection Screen	
10				Spare	
11				LX4	
12				Legs and Borders	
13				LX5	
14				Legs and Borders	
15				LX6	
16				French Action Rear Curtain	
17				Spare	

## DRAPERY

Type	Material	Colour	Width	Height	Quantity
House Curtain - French Action - Motorised	Wool Blend	Red	4820mm	6100mm	2
Legs	Wool	Black	4.400m	6100mm	10
Borders	Wool	Black	12000mm	6100mm	5
Tabs / Smother French Action – Hand operated	Wool	Black	6100mm	6100mm	4

## ACCESS EQUIPMENT

### Elevated Work Platform

JLG 30AM push around, vertical lift.  
Maximum reach is **9.09m**

### EWP Restrictions

Outriggers must be used at all times, one staff member to be located at base whilst in use.

### Ladders

1x 3m Fibreglass Ladder, 1 x 2m Fibreglass Ladder, 1 x 1.2 m Fibreglass Stepladder

### Staging Units

4 x 2.4m x 1.2m stage panels – 300mm / 600mm heights available

### Stage Covers

4 x 9m x 2m Tarkett rolls

### Stage Traps

3x traps located down stage, on apron.

4x traps on PS

4x traps on OP

## SAFETY CURTIAN

Safety Curtain installed:	Yes
Safety Curtain must be unobstructed at all times:	No, with permission of duty technician. Conditions apply
Fire curtain is installed to the proscenium wall.	

## LOADING DOCK

### Access

Truck access is on Beveridge Street. Vehicle will need to come from McCrae Street and park flush against the building on the footpath. Footpath has been reinforced.

Primary loading dock door is closest to table lift. Secondary loading door is further from the stage, however dimensions are larger.

Loading Dock Height	100mm from road surface to venue floor. All doors have ramps.
Primary Door Dimensions	2.12m High x 1m Wide
Secondary Door Dimensions	2.1m High x 1.8m Wide
Table Lifter	2.5m Wide x 1.8m Deep 3500kg Capacity

### Restrictions / Obstructions

- Loading dock is not at stage level. Loading dock is at auditorium floor level.
- Maximum width available is 1.43m due to hallway.

## STAGING NOTES

- All flown items must be rigged by a licenced rigger with rated equipment and is subject to approval by venue representative.
- Access to the stage galleries is from the cross over only.
- Maximum clearance of crossover .55m
- Wings have structural cross bracing, limiting access up to down stage. Cross bracing is located 3.91m to cyclorama wall, 2.55m to proscenium.
- No additional rigging gear available in house.

# LIGHTING

## Positions

### Stage LX Bars

See hanging plot for standard LX bar locations

### FOH Truss

Setting Line to lighting bar	10.9m throw
Usable bar width	10m
Notes	Truss is suspended from 4 chain motors. SWL chain motors 250kg

### FOH Perches A (PS & OP)

Proscenium FOH Perch	2.48m
Maximum lanterns per perch	8 x Selecon Acclaims

### FOH Perches B (PS & OP)

Proscenium to FOH Perch	6.92m
Maximum lanterns per perch	8 x Selecon Acclaims

## CONTROL

Lighting desk	ETC Ion 1000
Control channels	1000
Signal output	DMX512
Signal distribution	Duel stream of DMX, all five pin XLR, Two Uni Node
Remote riggers available onstage	Yes, via Ipad
Lighting desk	ETC Nomad
Control channels	1024
Signal output	IP
Signal distribution	Via Two Channel Node
Remote riggers available onstage	Yes

## DIMMER RACKS

Total Dimmers	84
Dimmer Locations	5 Dimmers located on PS electrical gallery above wings, 2 dimmers located in FOH ceiling, access by venue technicians only.
2.4Kw Dimmer Racks	7
Total dimmers @ 2.4kw per dimmer	72
Power Distribution Jands 12X10A	1



# HOUSE LIGHTS

Independent control	Yes
Control positions	PS Proscenium wall, foyer, Bio Box
Fade time adjustable	No, snap or 10 sec fade

# STAGE LUMINAIRES

## Profiles

Make	Model	Angle	Detail / Accessories	Watt	Total
Selecon	Pacific Profile	12/28 deg		1000w	15
Selecon	Pacific Profile	23/50 deg		1000w	4
Selecon	Acclaim Profile	18/34 deg		600w	16
Selecon	Acclaim Profile	24/44 deg		600w	6

## Fresnel's

Make	Model	Detail / Accessories	Watt	Total
Selecon	6"	18 x barndoors	1200w	18

## Par Cans

Make	Model	Angle	Detail / Accessories	Watt	Total
ETC	Multi par		MFL	600w	12
Pro Shop	Par64S RGB LED		20*3w	72w	24

## Cyclorama

Make	Model	Detail / Accessories	Watt	Total
Selecon	Aurora	4 way Fixture	1250w per unit	16

## Movers

Make	Model	Channels	Detail / Accessories	Watt	Total
GLP	Spot One LED	24-31	Profile	400w	2
ROBE	Robin 600 LED	10-37	Wash	415w	4
TOURPRO	180W HYBRID LED		SPOT / BEAM / WASH	180W	4

## Followspot

Make	Model	Angle	Detail / Accessories	Watt	Total
Strand	Solo SCI		Positioned stage right in balcony	1200w	1

## Additional Lighting

Item	Make	Model	Detail / Accessories	Total
Smoke Machine	Swefog	Live26	DMX controlled	1
Hazer	Swefog	Ultimate	DMX controlled	1

## Patching

Location	Quantity	Numbering (PS to OP)	Detail / Accessories
Perches OP B	6		
Perches PS A	6		
Perches PS B	6		
LX 1	12	12-1	
LX 2	12		
LX 3	12		
LX 4	12		
LX 5	12		

## POWER

3 Phase Outlets Spare	1x Lighting gallery 1x PS Pros wall 1x PS US wall 1x OP Pros wall
-----------------------	--

## CABLING

### 240v Extension Cable:

The theatre has a good stock of extension leads to accommodate the venue's standard lighting rig. Any additional equipment will require additional cable stock to be sourced.

## Lighting Notes

- DMX Universe 1 – Dimmers
- DMX Universe 2 – Intelligent lighting fixtures
- Both universes have Jands DD8 DMX splitter.
- All DMX 5pin XLR.

# AUDIO

## Control Positions

### Control Room / Bio Box

Dedicated mix position for Audio /LX, rear of ground floor auditorium, no seats pulled.

### Auditorium (Balcony)

- F&G 5-8
- Dedicated mix position for Pro2

### Other

OP/PS Stage.

Auditorium ground floor in front of control room / bio box – 16 seats removed

## Control and Amplification

### Audio Console

- Midas Pro2c (8 mic / line in, 8 mic / line out, 2 AES3)
- DL251 on stage (48 mic / line inputs and 16 mic / line out)

### Amplifiers

FOH	1 x MC 2 Audio T3500, 3 x MC2 Audio T1500, 2 x MC2 Audio T1000 Over Head Foldback - 1 x Yamaha P3500S
EQ	On Board Midas Only
FX	On Board Midas Only
Compression / Limiter / Gates	On Board Midas Only

### Playback

Item	Make	Model	Detail	Total
Flash Drive Unit	Denon	DN-F650R	FOH Mix, MP3 recorder/player	1
DVD Player	Tascam	DV-DO1U	FOH Mix, DVD player, HDMI over Cat5e.	1
CD Player	Denon	DNC620	FOH Mix, MP3 playable	1

# SPEAKER SYSTEM

FOH Speakers Funktion One	Ground Floor		
	Left	1x Res 1.5	Funktion One
	Centre	1x AX88	Funktion One
	Right	1x Res 1.5	Funktion One
	Subs	2x F121	Funktion One
	Front Fill	4x F55	Funktion One
	Under Balcony Fill	5x Control 1	JBL
	Balcony		
	Left	1x Res 1.5	Funktion One
	Right	1x Res 1.5	Funktion One
	Centre Delay	1x F88	Funktion One
Foldback	8 x Control one JBL, 4 on LX1, 4 on LX3 for over head		
	4x HK DARTs available 2x RCF ART 315a		

## Microphones

Make	Model	Detail / Accessories	Use	Total
Sennheiser	E945	Cardioid Vocal		8
Sennheiser	E914	Condenser Instrument		6
Shure	393c	PZM Cardioid		2
Sennheiser	E902	Kick drum		1
Sennheiser	E904	Compact drum mic		4
Sennheiser	EW500	Handheld 965, G-band 566-608MHz		4
Sennheiser	EW500	Lapel, G-band 566-608MHz		1
Sennheiser	E815s			1
Sennheiser	E845			2
Shure	SM58			1
AKG	GN50E		Lectern Mic (50cm)	2
BSS	AR133	DI Box		4
Shure	BG 1.0	Cardioid Vocal		1
Whirlwind	pcdi	Passive PC DI Box		3

## Accessories

Item	Model	Detail / Accessories	Total
Microphone stand	K&M 320/8B	Boom stand, heavy cast base, black	14
Microphone stand	K&M 259B	Short boom stand, heavy case base, black	4

## Cable Infrastructure Patching

Location From	Location To	QTY	Type	Label
Stage	Bio Box	24/8(+12 via FOH mix)	Analogue	
Stage	FOH Mix	16/16	Analogue	
Stage	FOH Mix	9	Cat5e	
Stage	FOH Mix	3	Cat6	
Stage	Comms	4	Cat5e	
Bio Box	Comms	4	Cat5e	

## Cabling

### Audio Cable

Good stock of cable available for venues equipment.

### Multicore

1 x 30m 24/4 multicore with stage box.

## AUDIO NOTES

FOH processing is managed through Sound Web blu100. FOH audio has been designed for even sound distribution, and capable of supporting rock events.

# AUDIO VISUAL

## CONTROL ROOM

AV can be controlled from the following areas

1. Control room / bio box rear of Auditorium
2. Onstage stage left

## Projectors

Type	Model	Detail / Accessories	Total
Panasonic	PT EX600E	6000 Lumen XGA	1

## Screens

### Projection Screen

- Front / Rear projection screen, rigged on fly line 9.
- Screen dimensions - 4m x 3m

## AV Playback Equipment

Item	Model	Detail / Accessories	Total
Tascam DVD player	DV-DO1U		1
Dell desktop PC			1
Dell Laptop	Latitude E6540		1

## Projector Rigging Points

### Front Projection

Projector has mounting assembly and standard rigging position is horizontal on fly line #3 bar. Can be rigged on other fly bars at client's request

### Rear Projection

Projector flown from fly line seventeen (17)

### Cabling

HDMI through cat5, good stock of cat5e for this purpose.

### Audio Visual Notes

Stage cross over limits rear projection throws.

# BACKSTAGE

## Communications

### Talkback

Master Unit	Clearcom system running two loops
Total sub stations	4x belt packs
Total headsets	5x headsets
Radio Units In-house	4x radio units
Talkback patching located at:	OP PS Bio Box FOH Mix Position

### Paging / Show relay

Show Relay available to dressing rooms and foyer.

### Stage Monitor

- Available café/bar, dressing rooms and PS proscenium wall.
- IR not available.

## DRESSING ROOMS

Dressing Room	Capacity	Details
1	6	13.5m <sup>2</sup>
2	0	Laundry / Linen Room
3	1	5.5m <sup>2</sup>
4	1	6.8m <sup>2</sup>
5	10+	21.6m <sup>2</sup>
Showers	3	
Toilets	4	

Tea / Coffee facilities	Yes
Fridge / freezer	Fridge available
Microwave	No, however available in venue
Running water	Yes

**NOTE:** Two (2) meeting rooms that can be used as chorus dressing rooms if required – direct access to stage

## Laundry / Wardrobe

Washing Machines	1
Dryers	1
Drying rooms	No
Iron / ironing board	1
Clothes racks	4

## Production Facilities

### Production Desk

No, however portable table can be installed by request

### Production Office / Green Room

One room in loading dock area can be set up upon request

### Phone

No. One can be installed upon request. Charges and conditions apply

### Fax

No

### Access to phone for internet access

Internet accesses via Wi-fi, conditions apply.

## Stage Door

### Access

Via Beveridge Street, parking on reinforced footpath. Loading dock door is closest door to lane way.



# Additional facilities and information

## Orchestral

1 x Hoffman Baby Grand Piano. Tuning fees apply.

## Rehearsal Space

Meeting Rooms 1&2 carpeted room, up stairs, close to dressing rooms, 10 x 8.7m

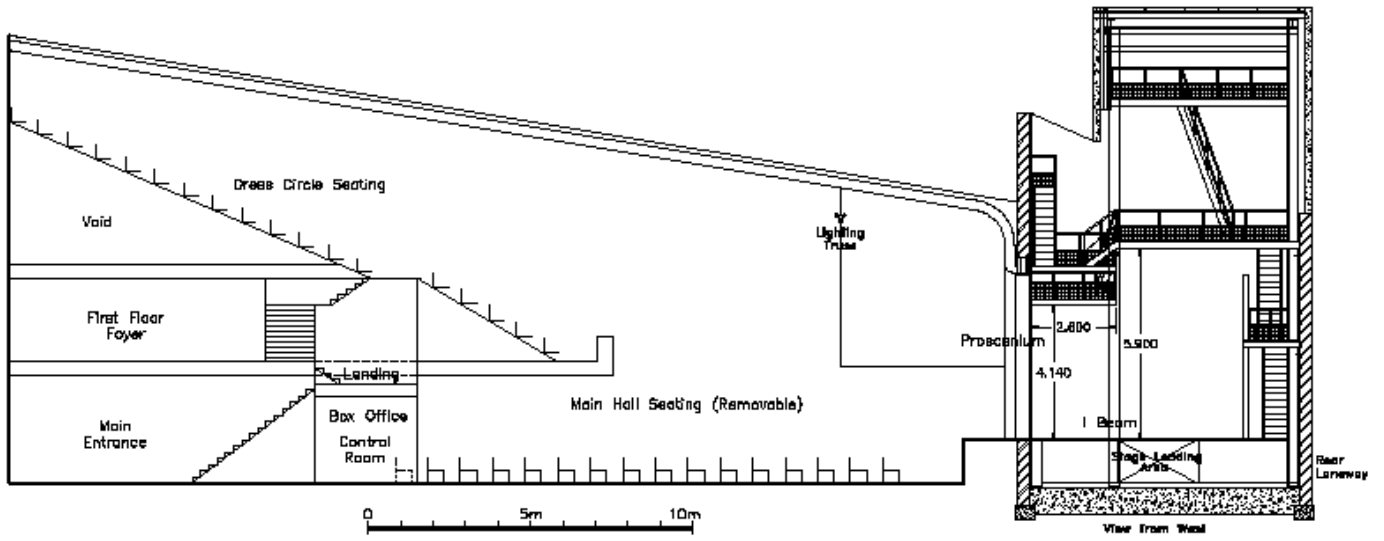
## Venue Contacts

Venue Address	53-57 McCallum Street, Swan Hill, Vic 3585.
Venue Postal Address	Po Box 488, Swan Hill, 3585
Technical Co-ordinator	Craig Martin
Technical Co-ordinator – Landline	03 5036 2592
Technical Co-ordinator - Mobile	0427 813 055
Technical Co-ordinator - Email	cmartin@swanhill.vic.gov.au
Head Venue Technician	Brad Morpeth
Head Venue Technician - Landline	03 5036 2443
Head Venue Technician - Mobile	0428 981 935
Head Venue Technician – Email	bmorpeth@swanhill.vic.gov.au

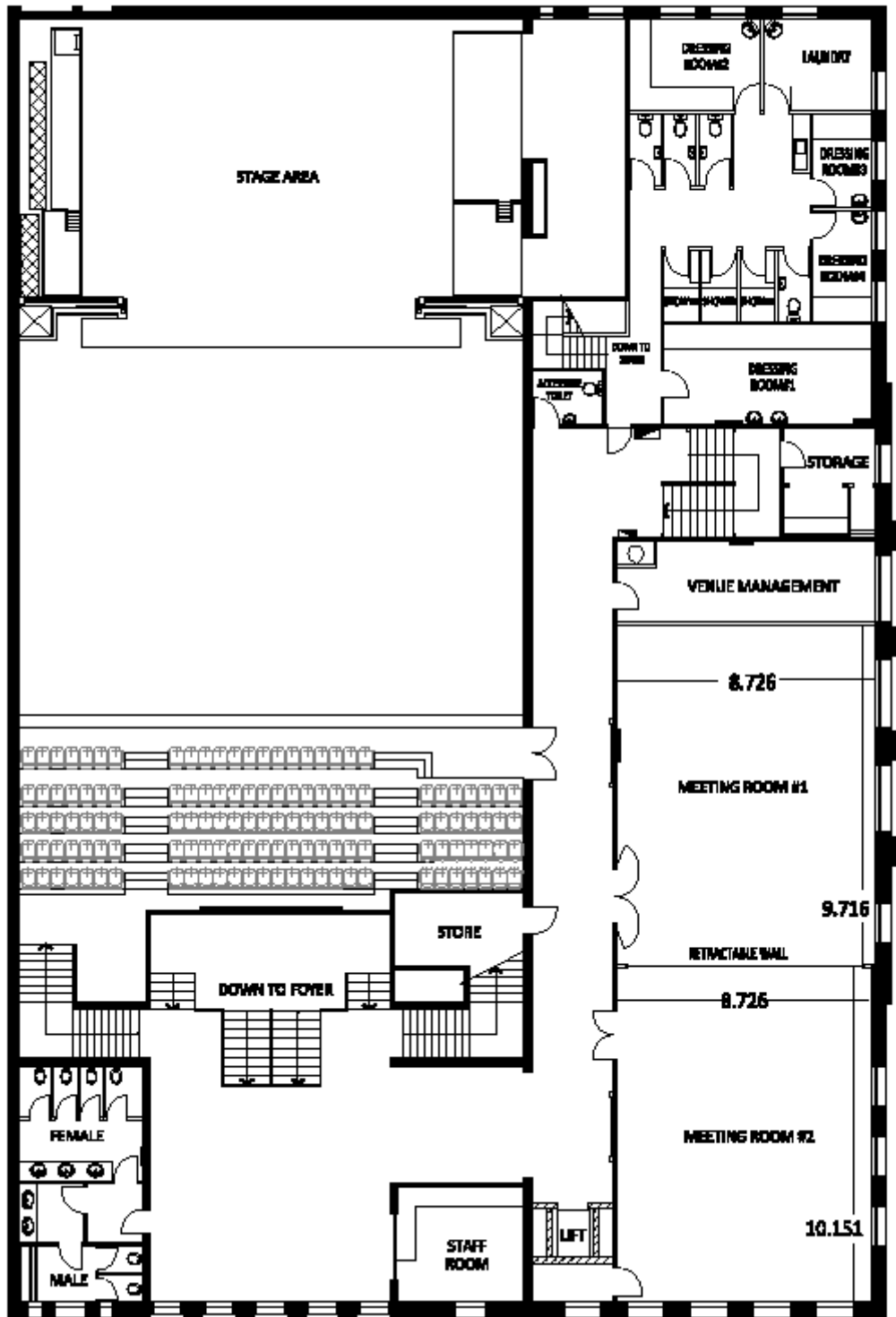
## Venue Plans

Venue plans are available in DWG format on request.

# OVERALL CROSS SECTIONAL VIEW



# SWAN HILL TOWN HALL PACC 1ST FLOOR PLAN



# SWAN HILL TOWN HALL PERFORMING ARTS CONFERENCE CENTRE

## GROUND FLOOR PLAN

